

# Credentialing Insights

Email Update



## TJC Announces Change in Reappointment/Re-Privileging Timelines

In November 2022, the Joint Commission revised its practitioner reappointment/re-privileging timeline from a two-year to a three-year period, unless a shorter period is legally required.

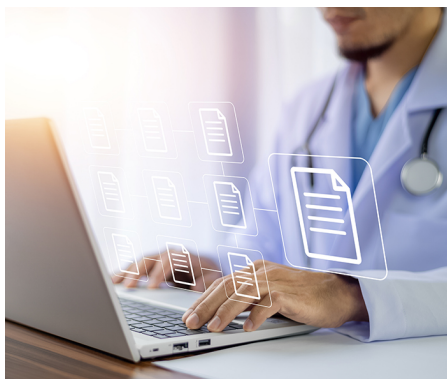
[READ MORE >](#)



## CMS Seeks to Create National Directory of Providers and Services

In October 2022, CMS asked for public input on creating a National Directory of Healthcare Providers and Services, intended to address today's fragmented health care directory landscape.

[READ MORE >](#)



## Changes to AMA Profiles Have Taken Effect

AMA Profiles have been updated to reflect significant changes, including reformatted dates displayed for ACGME-accredited medical training programs and removal of the DEA DATA waiver.

[READ MORE >](#)



## WEBINARS

### Learn to Identify Red Flags with our Recorded Webinar

#### Today's Red Flags: Identifying and Responding to Credentialing Complexities

Originally aired on Feb. 1, 2023, this webinar features speaker, consultant, and writer Kathy Matzka, CPMSM, CPCS, FMSP, who discusses how to identify potential red flags, follow up on the issues, and document the follow-up work appropriately.

[WATCH THE WEBINAR >](#)



## ADD TO YOUR CALENDAR

#### “Move to a Three-Year Reappointment Cycle: To change or not to change? That is the question.”

*(download calendar invite)*

On April 12, 2023 at noon CST, we will discuss the pros and cons of transitioning to a three-year reappointment period, as well as the industry standards and governance documents that will need to be evaluated and considered.

[REGISTER TODAY! >](#)



Credentialing  
Services

[Email Preferences](#) | [Contact Us](#)

Copyright %xtyear%%. [American Medical Association](#). All rights reserved.

American Medical Association. 330 N. Wabash Ave., Suite 39300, Chicago, IL 60611-5885 | (800) 262-3211

To unsubscribe from this email please [click here](#).

This message was sent to %%emailaddr%%